

## DIGITAL DELAY LINE SERIES 0464 ECL 10K DELAY MODULE DUAL OUTPUTS

### TECHNICAL INFORMATION

#### TEST CONDITIONS

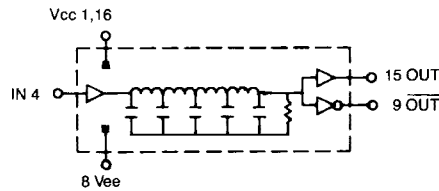
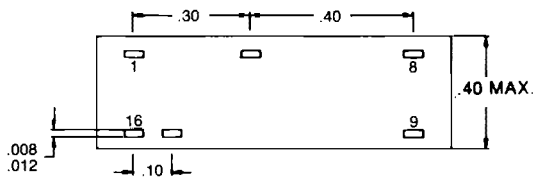
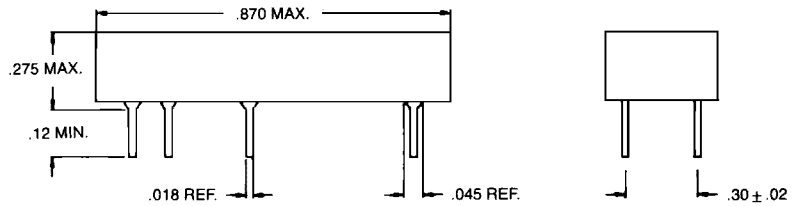
Logic 1	- 0.9 Volts
Logic 0	- 1.8 Volts
Rise Time	2.0 Nsec (20% to 80%)
Pulse Width	2 x Delay
Pulse Period	4 x Pulse Width
Supply Voltage, Vee	- 5.2 Volts
Output Terminations	50 Ohm ± 1% to - 2 Volts
Ambient Temperature	25°C

#### PERFORMANCE CHARACTERISTICS

Delay Tolerances  
As Specified in Table  
Performance Characteristics apply at  
above listed Test Conditions.

#### ELECTRICAL CHARACTERISTICS

Supply Voltage, Vee	- 4.94 To - 5.46 Volts
Logic 1 Input Voltage	- 0.98 Volts min.
Logic 1 Input Current	245 Microamp max.
Logic 1 Output Voltage	- 0.96 Volts min.
Logic 0 Input Voltage	- 1.63 Volts max.
Logic 0 Input Current	0.5 Microamp min.
Logic 0 Output Voltage	- 1.65 Volts max.
Operating Temperature Range	- 30°C To 85°C
Temperature Coefficient Of Total Delay	500PPM/°C Typical
Minimum Input Pulse Width	100% Of Total Delay
Maximum Duty Cycle	50%
—Compatible with ECL 10K circuits	
—Other delays and tolerances upon request	



Part Number	Rise Time 2, 3	Delay 1, 3	Part Number	Rise Time 2, 3	Delay 1, 3
0464-0004-01	3	4 ± .5	0464-0035-01	7	35 ± 2
0464-0005-01	3	5 ± 1	0464-0040-01	8	40 ± 2
0464-0006-01	3	6 ± 1	0464-0045-01	8	45 ± 2
0464-0007-01	3	7 ± 1	0464-0050-01	9	50 ± 2
0464-0008-01	3	8 ± 1.5	0464-0055-01	9	55 ± 2
0464-0009-01	3	9 ± 1.5	0464-0060-01	10	60 ± 2
0464-0010-01	4	10 ± 1.5	0464-0065-01	10	65 ± 2.5
0464-0011-01	4	11 ± 1.5	0464-0070-01	11	70 ± 2.5
0464-0012-01	4	12 ± 1.5	0464-0075-01	11	75 ± 2.5
0464-0013-01	4	13 ± 1.5	0464-0080-01	12	80 ± 2.5
0464-0014-01	4	14 ± 1.5	0464-0085-01	13	85 ± 3
0464-0015-01	5	15 ± 1.5	0464-0090-01	13	90 ± 3
0464-0016-01	5	16 ± 1.5	0464-0095-01	14	95 ± 3
0464-0017-01	5	17 ± 1.5	0464-0100-01	15	100 ± 3
0464-0018-01	5	18 ± 1.5	0464-0125-01	18	125 ± 4
0464-0019-01	5	19 ± 1.5	0464-0150-01	20	150 ± 5
0464-0020-01	5	20 ± 2	0464-0200-01	25	200 ± 6
0464-0021-01	6	21 ± 2	0464-0250-01	25	250 ± 8
0464-0022-01	6	22 ± 2	0464-0300-01	30	300 ± 10
0464-0023-01	6	23 ± 2	0464-0350-01	30	300 ± 10
0464-0024-01	6	24 ± 2	0464-0400-01	30	400 ± 12
0464-0025-01	6	25 ± 2	0464-0450-01	30	450 ± 14
0464-0030-01	7	30 ± 2	0464-0500-01	30	500 ± 15

1 Delays measured at 50% of the pulse on Leading Edge.  
2 Rise time measured from 20% to 80% of the pulse.  
3 All timing in NS.

Specifications Subject To Change Without Notice